



Catalogue

Sliding door
PL60
Inside installation

Today thanks to a high level of technicality of our products, the fire-proof doors are lighter and close to traditional doors.

Flema was established in 2004 with the purpose of developing fire-proof products (roller shutters, sectional and sliding doors) of a design very close to traditional closing elements in order to achieve light, modern and easy to produce, assemble and install doors at very competitive prices.

To achieve this challenge, we have filed a patent. The concept is quite simple: synthetic profiles with an intumescent core

1. Plate	3
2. Accessories for the plate	8
3. Frame profiles	11
4. Hardware	12



The sliding door **PL60** has been approved as per the CEN1363-1 and the 1634-1 European standards.

Our prices are

- ex-works
- excluding VAT
- Gross price without discount
- in euro

Delivery time :

- 4 weeks for the kits
- 3 weeks for the components in bulk

Legend

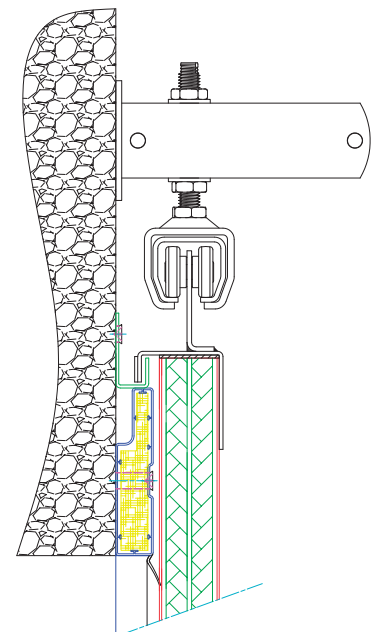
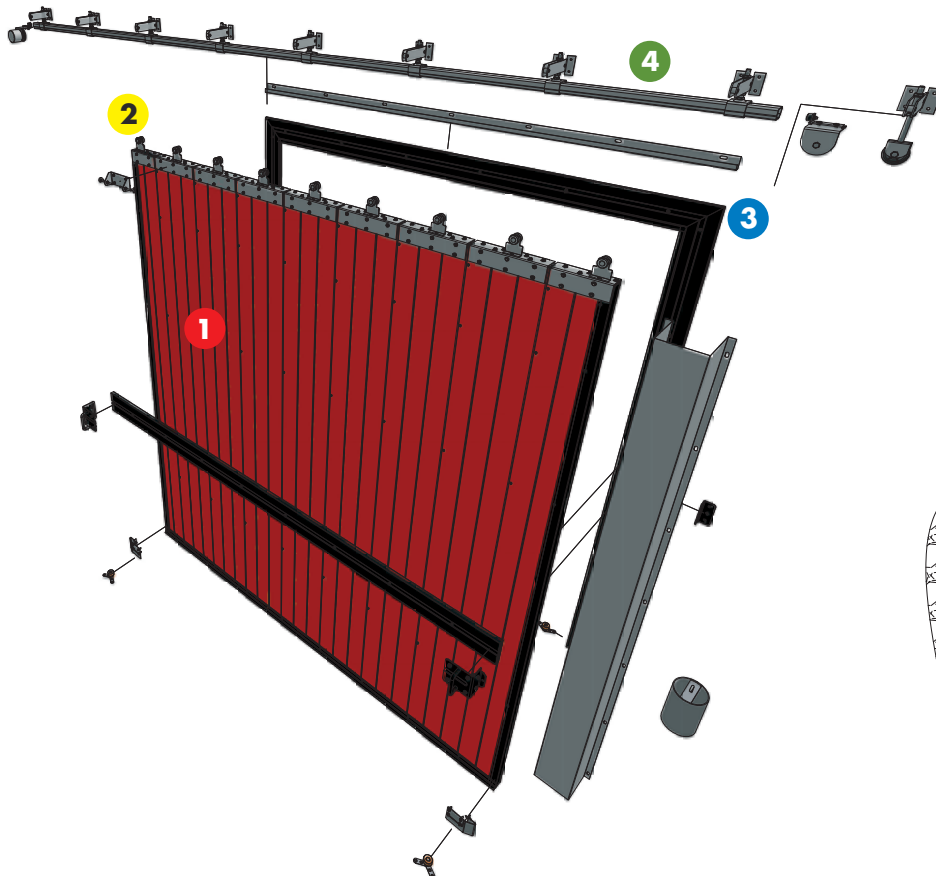
Weight	Quantity per box

Patented


Sliding door **PL60**

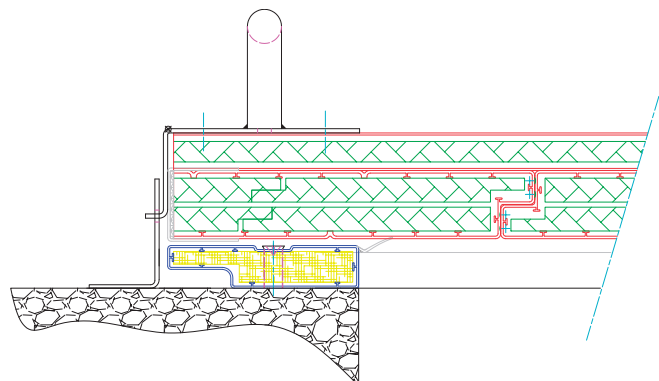
Fire resistance : 60'

The sliding door **PL60** Flema is fire-proof door that is characterized by its patented RF60 plate and frame. The panels of the sectional door are used and simply placed vertically. The mechanical system is very simple.



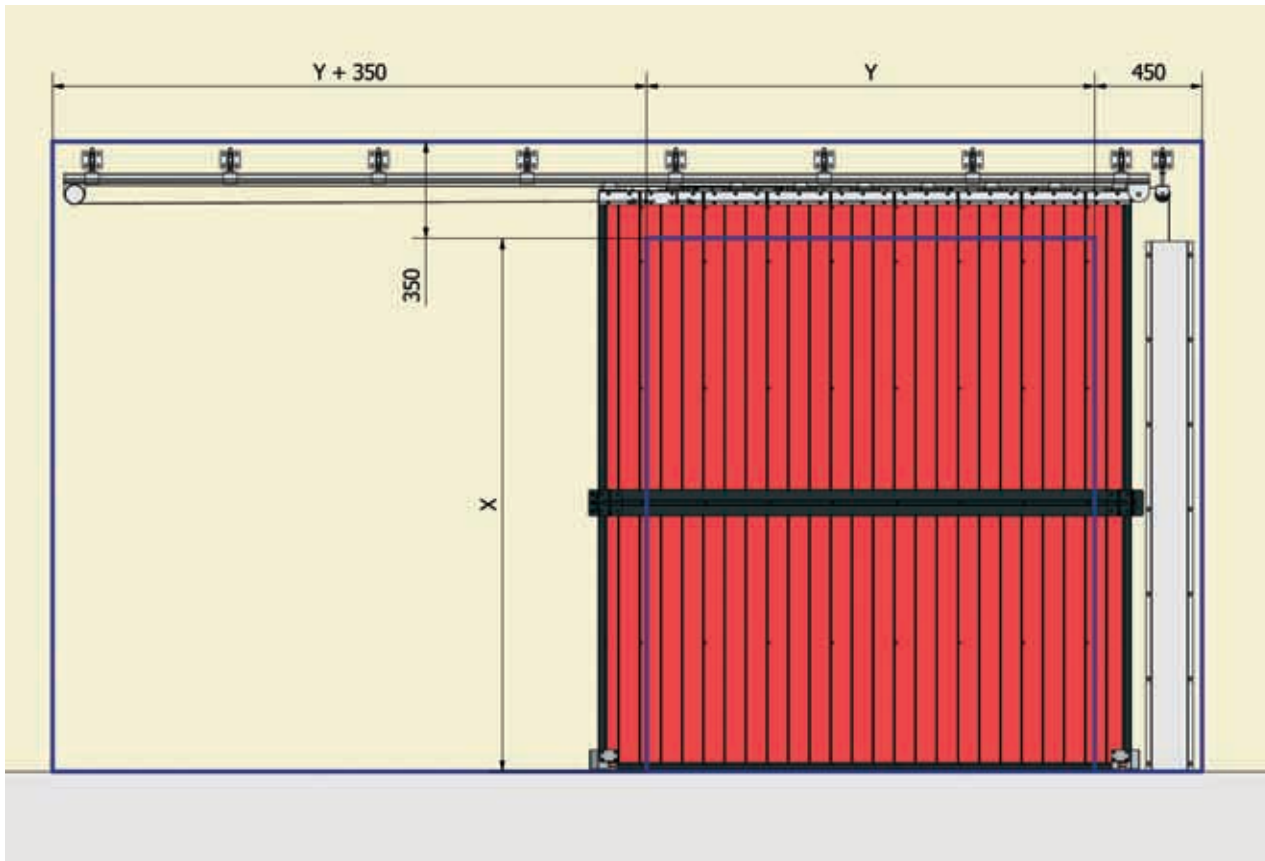
This door has many advantages :

- patented system 
- thickness of panel : 40mm
- synthetic matter : rustproof
- mass tinted
- easy to install
- conventional Flexi-Force mechanism
- air and water tightness
- reduced obstruction
- electrical motor
- approved by the food processing and medical industries
- RF60, EI60, EW60
- simple to transport




Sliding door **PL60**

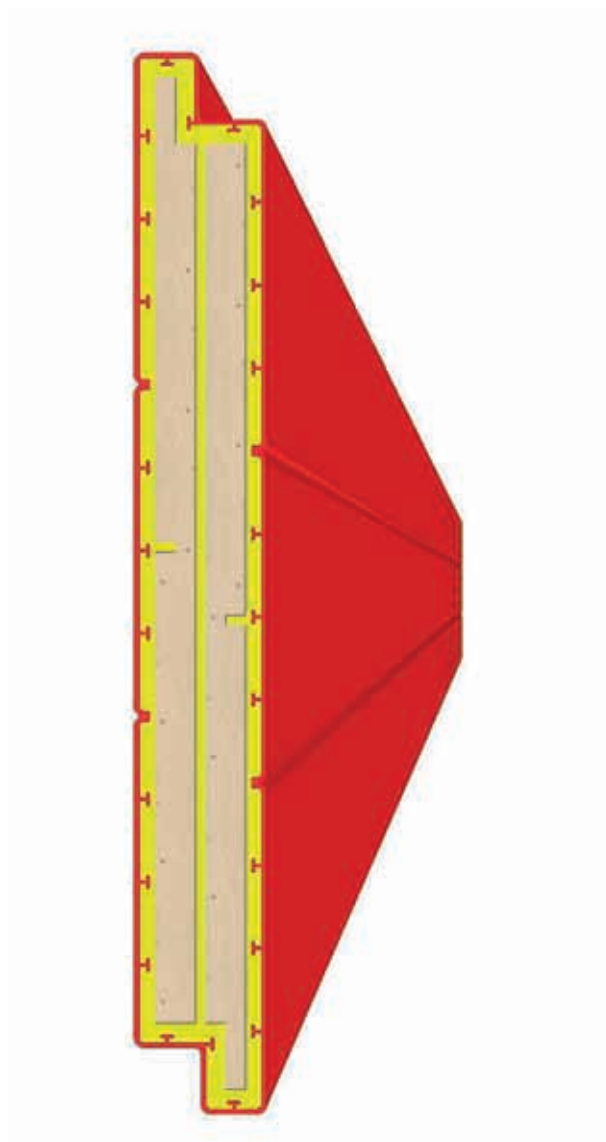
Opening preparation details



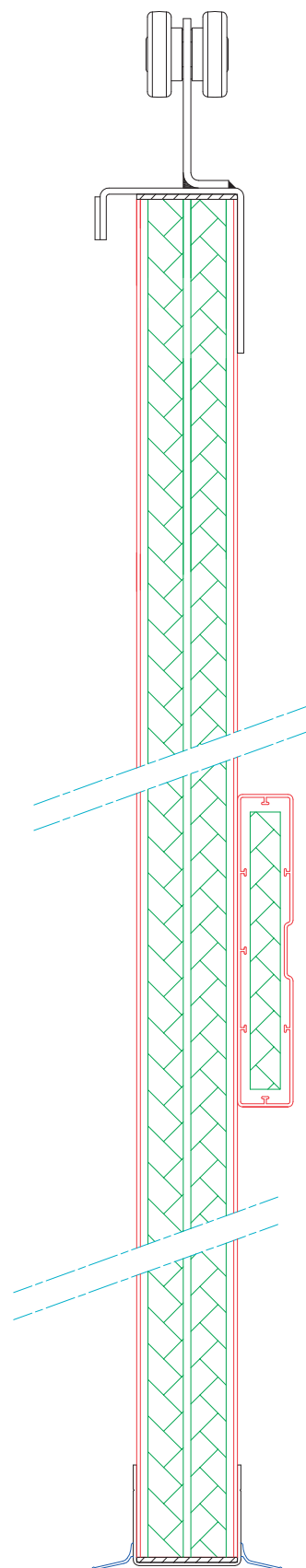
Y = day width

X = day height

The door plate of the sliding door consists of synthetic panels with an intumescent core. 





- thickness : 40mm
- width : 300mm
- weight: 38kg/m²
- mass tinted
- synthetic matter
- colours available :
 - red
 - grey

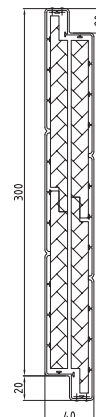


Red panel RF60





Ref.	Description	Unit		
3101	Lg 3200mm	pc	38kg/m2	18
3102	Lg 4200mm	pc	38kg/m2	18
3103	Lg 5200mm	pc	38kg/m2	18
3104	Lg 6200mm	pc	38kg/m2	18

synthetic matter
red colour

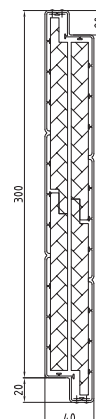


Grey panel RF60



Ref.	Description	Unit		
3151	Lg 3200mm	pc	38kg/m2	18
3152	Lg 4200mm	pc	38kg/m2	18
3153	Lg 5200mm	pc	38kg/m2	18
3154	Lg 6200mm	pc	38kg/m2	18

synthetic matter
grey colour



PVC Profile 40x40



Ref.	Description	Unit		
2181	Lg 3200mm	pc	0.86	50
2182	Lg 4200mm	pc	1.14	50

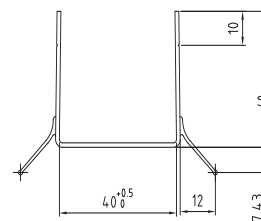
Profile in synthetic matter 40x40
Is placed on the panels around the plate.

Bottom seal



Ref.	Description	Unit		
2151	Lg 3200mm	pc	0.96	10
2152	Lg 4200mm	pc	1.26	10
2153	Lg 5200mm	pc	1.56	10

Co-extruded profile in synthetic matter 40x40
PVC profile used as bottom seal

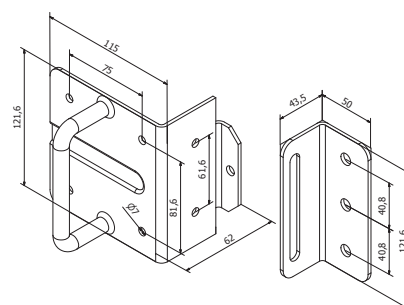


Kit of handles





Ref.	Description	Unit		
1401	kit of handles	set (4)	1.8	12

This kit includes :
The male handles set
The female handles set

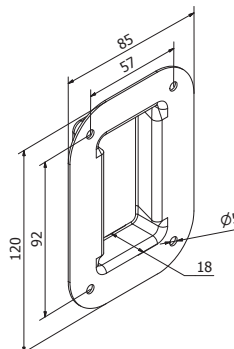


Flush handles





Ref.	Description	Unit		
1501	flush handles	pc	0.15	100

Handle placed at the outside of the door

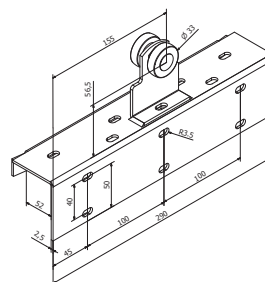


Panel support



Ref.	Description	Unit		
2551	panel support	pc	1.063	16

Is fixed on each panel
it is used to suspend each panel on the rail

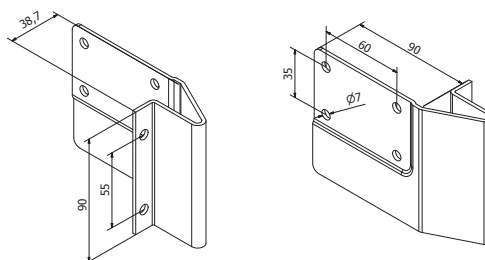


Plates





Ref.	Description	Unit		
2581	plates	paire	0.668	60

left and right
guide the door on the level of the rollers

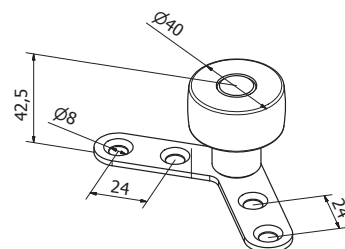


Tracking rollers



Ref.	Description	Unit		
1051	tracking rollers	pc	0.14	67

Is placed on each side of the door.



Perlau 40mm/2mm





Ref.	Description	Unit		
7011	40mm/2mm	mt	0.092	10

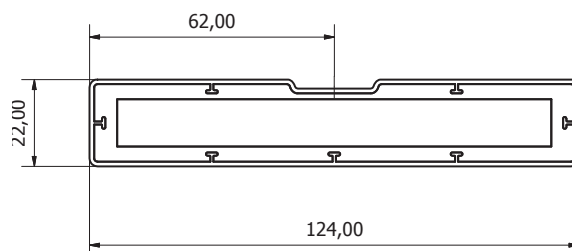
Is placed around the plate.

Reinforcement profile

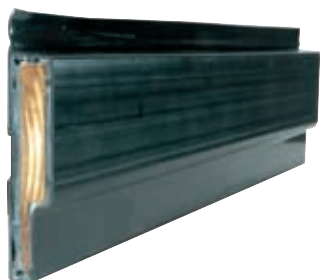




Ref.	Description	Unit		
2491	Lg 3200mm	pc		30
2492	Lg 4200mm	pc		30

Is fixed on the plate in order to rigidify the door.

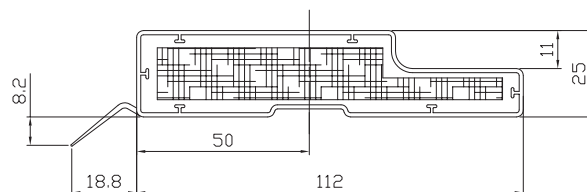


Fire-proof frame profile



Ref.	Description	Unit		
2481	Lg 3200mm	pc	1.04	30
2482	Lg 4200mm	pc	1.37	30
2483	Lg 5200mm	pc	1.69	30

Profile in synthetic matter.
Allows the fire, water and air resistance.
Is placed around the opening.



Horizontal angle of lintel



Ref.	Description	Unite		
6201	Lg 3000mm	pc	3.3	60

Profile in galvanised steel 2mm.
Is placed on the top of the frame.
Allows the maintain of the plate
against the frame in
case of fire.

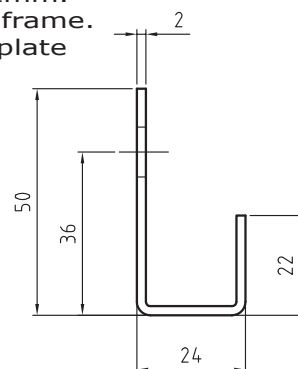
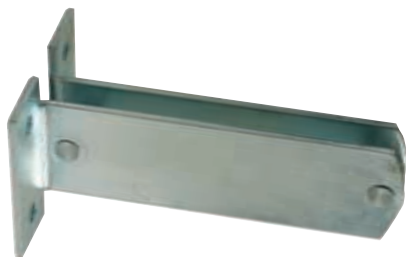


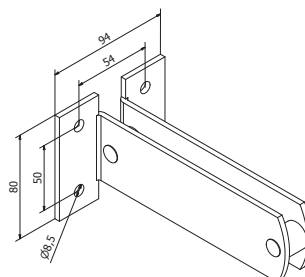


Plate for track support





Ref.	Description	Unit	 KG	
2561	plate for track support	pc	0.8	20

Allows to maintain the support (ref 2571).
Is placed each 700mm.
Allows to maintain the pulley of counterweight.

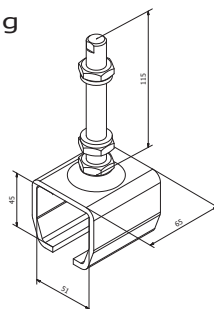


Support





Ref.	Description	Unit	 KG	
2571	support	pc	0.571	28

Allows to fix the rail.
Is assembled with the plate for track support (ref 2561).
Is also used for the closing system.

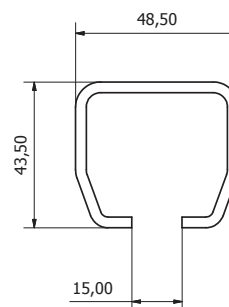


Track



Ref.	Description	Unit	 KG	
6501	lg 6000mm	pc		

Is fixed in the support (ref 2571).



Brake + control box



Ref.	Description	Unit	KG	
2802	Brake + box	pc		

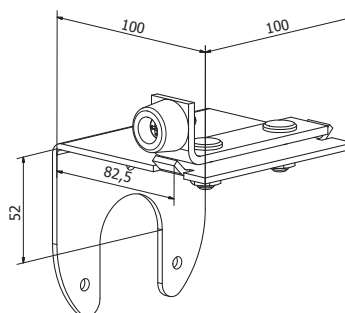
Allows to maintain the opening of the door and to start the closing of the door in case of fire controlling its speed.

Brake support



Ref.	Description	Unit	KG	
2803	brake support	pc	0.54	40

Is used for the brake system.

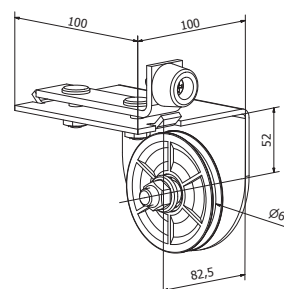


Pulley

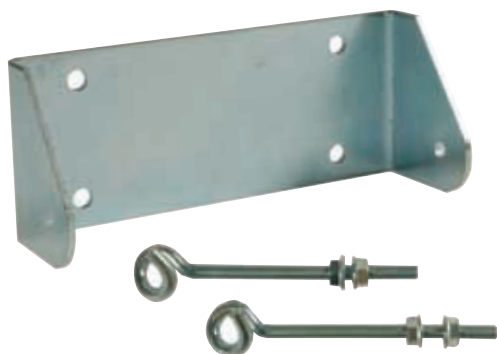


Réf.	Description	Unité	KG	
2801	pulley	pc	0.78	30

Is used for the brake system.

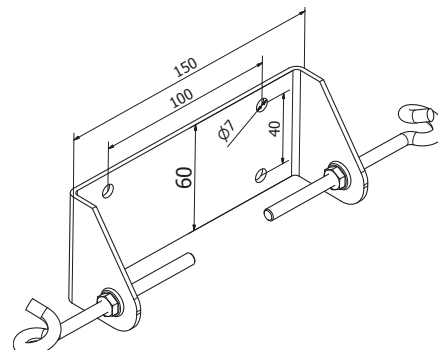


Tensioner



Ref.	Description	Unit		
2804	tensioner	pc	0.35	60

Is used for the brake system.



Cable



Ref.	Description	Unit		
2806	cable	pc		

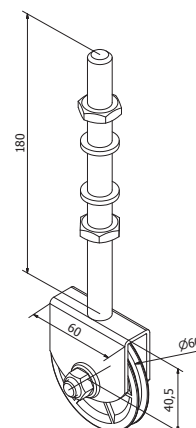
Is used for the closing system.

Pulley of counterweight



Ref.	Description	Unit		
2805	pulley of counterweight	pc	0.62	60

Is used for the closing system.



FLEMA sprl

rue Outre 46

7910 Anvaing

Belgique

T : +32(0)69/67.27.87

F : +32(0)69/67.27.80

TVA : BE 865.121.323

Banque: Fortis : 001 444 613 724

